



**Pivot 1641**

Support 1639/1636/1633

Resistance 1646/1652/1657

**Possible Range 1635 to 1660**

**Trading Tips**

Long positions may be opened above 1642 with targets at 1646/1652 and stop-loss at 1637

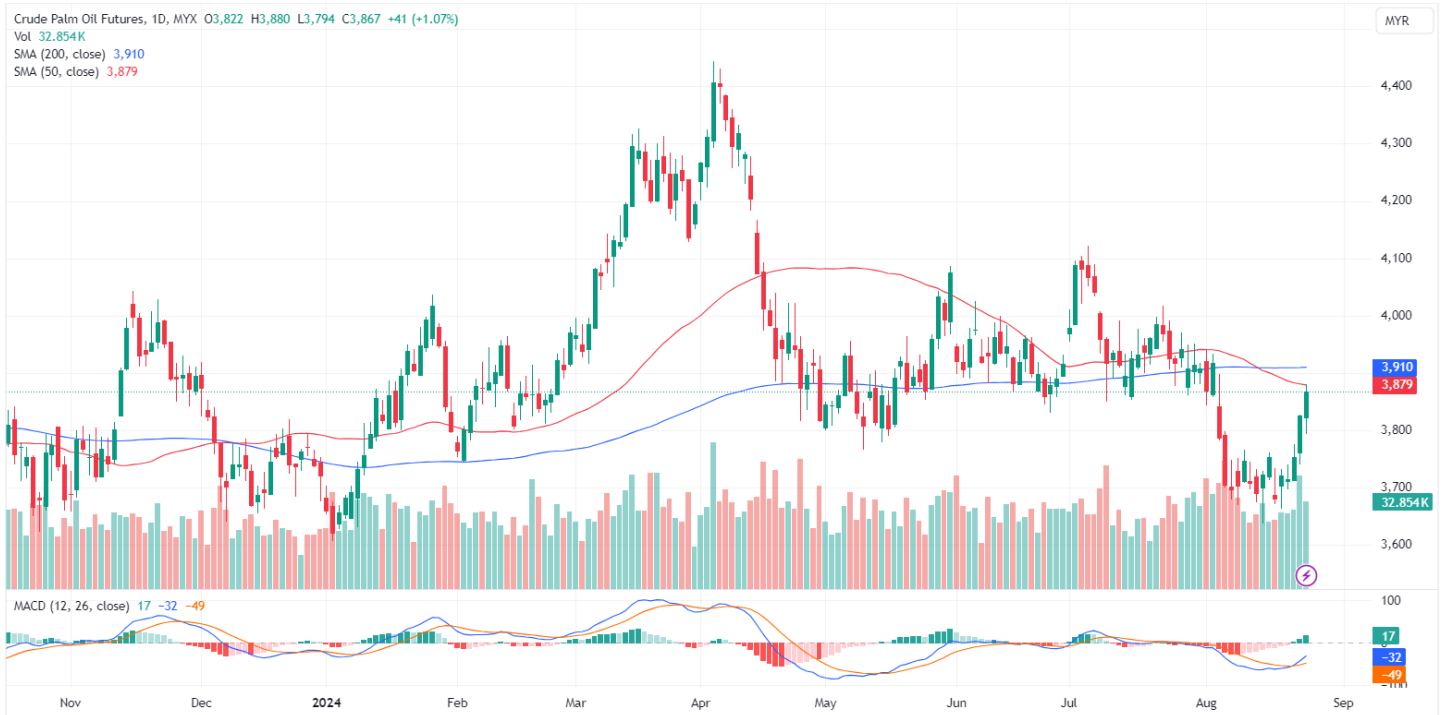
Short positions may be opened below 1642 with targets at 1639/1636 and stop-loss at 1647

FKLI Aug month dropped 3 points or 0.18% to close lower at 1641.5. The FBMKLCI index ended the week on a lower note amid cautious trading on Friday. The lack of buying momentum was attributed to anticipation of a keynote address by U.S. Federal Reserve Chairman Jerome Powell during the night session, according to analysts.

Overnight Dow Jones rose 462 points to 41175. Wall Street and global shares surged toward all-time highs on Friday, while Treasury yields fell and the dollar weakened, following a speech by U.S. Federal Reserve Chair Jerome Powell, which confirmed that the United States would soon start cutting interest rates.

Tracking the positive performance of US performance, the FKLI potentially trade higher. The immediate support and resistance levels are identified at 1639 and 1646, respectively.

*(News Source: Bernama, Reuters)*



**Pivot 3847**

Support 3847/3829/3810/3794

Resistance 3878/3897/3914/3932

**Possible Range 3820 to 3920**

### Trading tips

Long positions may be opened above 3865 with targets 3878/3897 at stop-loss at 3845

Short positions may be opened below 3865 with targets at 3847/3829 stop-loss at 3885

FCPO Nov month rose 41 points or 1.07% to close higher at 3867. Malaysian crude palm oil futures rose for the third consecutive session on Friday, reaching their highest level in nearly three weeks. This increase was supported by expectations of lower output in August and stronger demand.

Overnight Soybean oil Dec Month rose 1.40 to close higher at 40.38. Dalian's active palm oil contract rose 112 points to close higher at 7904 on previous night session.

Tracking positive performance in rival edible oil, palm prices potentially trade further higher, beware of profit taking activities. The immediate support and resistance levels are pinpointed at 3847 and 3878, respectively.

*(News Source: Reuters)*

**APEX SECURITIES BERHAD– CONTACTLIST**
**APEX SECURITIES BHD**
**Head Office:**

5th Floor Menara UAC, 12, Jalan PJU 7/5,  
Mutiara Damansara,  
47800 Petaling Jaya,  
Selangor Darul Ehsan, Malaysia

General Line: (603) 7890 8899

**Petaling Jaya Office:**

16th Floor, Menara Choy Fook Onn,  
No.1B Jalan Yong Shook Lin,  
46050 Petaling Jaya,  
Selangor Darul Ehsan, Malaysia

General Line: (603) 7620 1118

**DEALINGTEAM**
**Head Office:**

Kong Ming Ming (ext 2002)  
Shirley Chang (ext 2026)  
NorisamBojo (ext 2027)  
Ahmad Mujib (ext 2028)

**Institutional Dealing Team:**

Siti Nur Nadhirah (ext 2032)

**PJ Office:**

General Line: (603) 7620 1118  
Azfar Bin Abdul Aziz (Ext 822)

**Futures Dealing Team:**

Dealing Line: (603) 7890 8866

**RESEARCH TEAM**
**Mutiara Damansara Office:**

Kenneth Leong (ext 2093)  
Steven Chong (ext 2068)  
Jayden Tan (ext 2069)  
Chelsea Chew (ext 2070)

In the light of adding joy in learning the FUTURES/DERIVATIVES markets, we would like to introduce to you the **SIMULATOR** (similar to a demo account). The service is FREE at limited period. Subscribe to a trial account for the trading simulator and get a free 30-day access.

This is a learning platform and no money/deposit shall involve in this virtual simulator. If you are interested, you may register to the link below:-  
<https://qstrp.quicksuitetrading.com/subscriptions/bmy/subscribe>

**If you are ready to GO LIVE, you may contact us at 03-79600026. LIVE trading shall only perform in APEX TRADE.**

**APEX SECURITIES BERHAD-DISCLAIMER**

Disclaimer: The report is for internal and private circulation only and shall not be reproduced either in part or otherwise without the prior written consent of Apex Securities Berhad. The opinions and information contained herein are based on available data believed to be reliable. It is not to be construed as an offer, invitation or solicitation to buy or sell the securities covered by this report.

Opinions, estimates and projections in this report constitute the current judgment of the author. They do not necessarily reflect the opinion of Apex Securities Berhad and are subject to change without notice. Apex Securities Berhad has no obligation to update, modify or amend this report or to otherwise notify a reader thereof in the event that any matter stated herein, or any opinion, projection, forecast or estimate set forth herein, changes or subsequently becomes inaccurate.

Apex Securities Berhad does not warrant the accuracy of anything stated herein in any manner whatsoever and no reliance upon such statement by anyone shall give rise to any claim whatsoever against Apex Securities Berhad. Apex Securities Berhad may from time to time have an interest in the company mentioned by this report. This report may not be reproduced, copied or circulated without the prior written approval of Apex Securities Berhad.

Published & Printed by:

**Apex Securities Berhad**  
**197901003400 (47680-X)**

(A Participating Organisation of Bursa Malaysia Securities Berhad)