

Daily Market Commentary

FKLI Spot Month Futures



Pivot 1563

Support 1558/1554/1549

Resistance 1563/1568/1572

Possible Range 1550 to 1570

Trading Tips

Long positions may be opened above 1563 with targets at 1568/1572 and stop-loss at 1558

Short positions may be opened below 1563 with targets at 1558/1554 and stop-loss at 1568

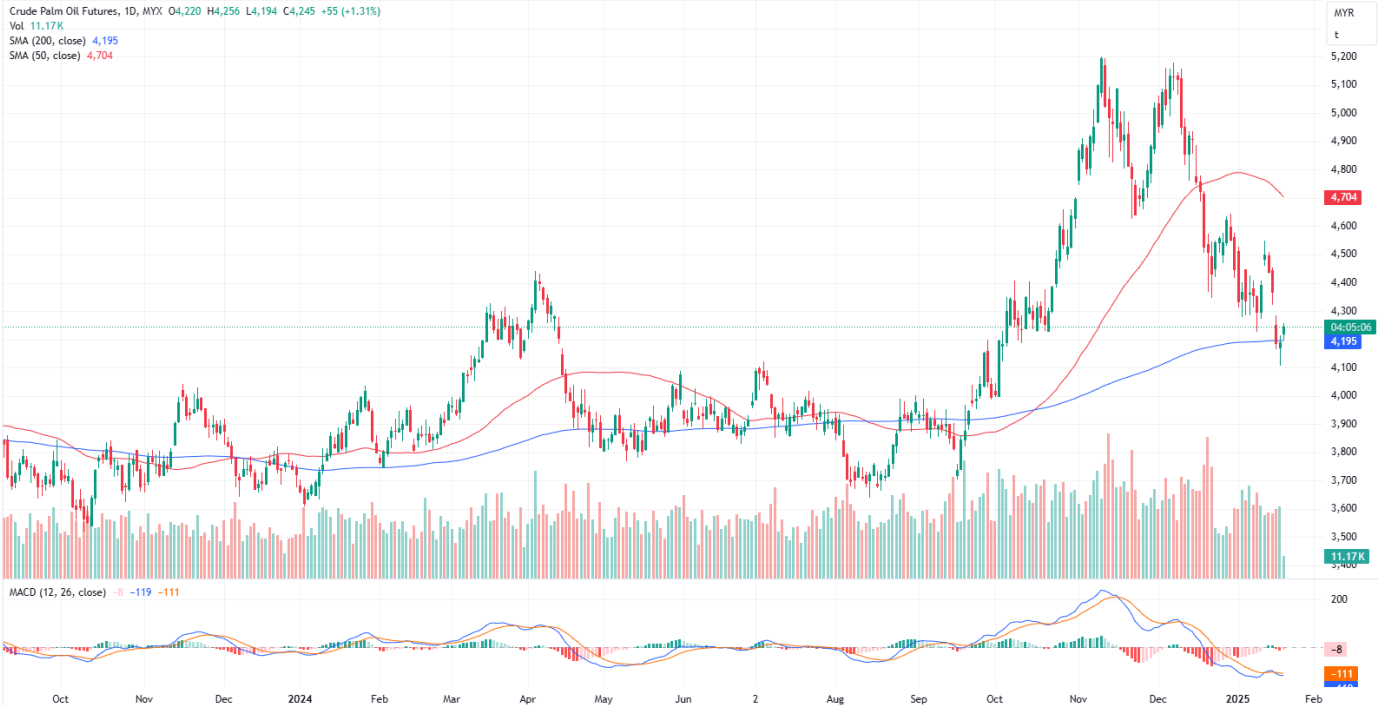
FKLI Jan month dropped 5 points or 0.32% to closed lower at 1562 on midday session. Malaysia's benchmark stock index edged slightly higher by midday as investors anticipated President-elect Donald Trump's return to the White House.

The FKLI trading hovering between gain and losses on morning session, trading within a sideways consolidations range, if we see the middle of the range at 1562 to 1563, if support above there is potential of buying, if fail to support selling are potential. Our view maintains buy on retracement for short term trading. If the index could again stand above 1568 to 1569, we might see the highest to reach 1572 range. Beware of any sentiment change. Immediate support and resistance levels are identified at 1558 and 1563 respectively.

(News Source: The Star)

Daily Market Commentary

FCPO 3rd Month Futures



Pivot 4231

Support 4231/4206/4182/4161

Resistance 4255/4280/4302/4325

Possible Range 4200 to 4300

Trading tips

Long positions may be opened above 4231 with targets 4255/4280 at stop-loss at 4211

Short positions may be opened below 4231 with targets at 4206/4182 stop-loss at 4251

FCPO Apr month rose 55 points or 1.31% to closed higher at 4245 on midday session. Malaysian crude palm oil futures extended gains for a second session on Monday, supported by a rise in Dalian vegetable oils, as traders awaited fresh cues from Malaysian palm oil export data for the January 1-20 period.

In daily chart, the palm price continues go higher and reached another day high at 4256, remain trading within the downward channel range, new support see at 4230 to 4235, support above this line could remain trading in positive note. Resistant range spot at 4255 to 4260 range, to trade further higher, the price must break above this range. Beware of the strong resistant at 4280 to 4285 range. The immediate support and resistance levels are identified at 4231 and 4255, respectively.

(News Source: Reuters)

APEX SECURITIES BERHAD – CONTACT LIST

APEX SECURITIES BHD	DEALING TEAM	RESEARCH TEAM
Head Office: 5th Floor Menara UAC, 12, Jalan PJU 7/5, Mutiara Damansara, 47800 Petaling Jaya, Selangor Darul Ehsan, Malaysia General Line: (603) 7890 8899 Petaling Jaya Office: 16th Floor, Menara Choy Fook Onn, No.1B Jalan Yong Shook Lin, 46050 Petaling Jaya, Selangor Darul Ehsan, Malaysia General Line: (603) 7620 1118	Head Office: Kong Ming Ming (ext 2002) Shirley Chang (ext 2026) Norisam Bojo (ext 2027) Ahmad Mujib (ext 2028) Institutional Dealing Team: Siti Nur Nadhirah (ext 2032) PJ Office: General Line: (603) 7620 1118 Azfar Bin Abdul Aziz (Ext 822) Futures Dealing Team: Dealing Line: (603) 7890 8866	Mutiara Damansara Office: Kenneth Leong (ext 2093) Steven Chong (ext 2068) Jayden Tan (ext 2069) Chelsea Chew (ext 2070)

In the light of adding joy in learning the FUTURES/DERIVATIVES markets, we would like to introduce to you the **SIMULATOR** (similar to a demo account). The service is FREE at limited period. Subscribe to a trial account for the trading simulator and get a free 30-day access.

This is a learning platform and no money/deposit shall involve in this virtual simulator. If you are interested, you may register to the link below:- <https://qstrp.quicksuitetrading.com/subscriptions/bmy/subscribe>

If you are ready to GO LIVE, you may contact us at 03-7960 0026. LIVE trading shall only perform in APEXTRADE.

APEX SECURITIES BERHAD - DISCLAIMER

Disclaimer: The report is for internal and private circulation only and shall not be reproduced either in part or otherwise without the prior written consent of Apex Securities Berhad. The opinions and information contained herein are based on available data believed to be reliable. It is not to be construed as an offer, invitation or solicitation to buy or sell the securities covered by this report.

Opinions, estimates and projections in this report constitute the current judgment of the author. They do not necessarily reflect the opinion of Apex Securities Berhad and are subject to change without notice. Apex Securities Berhad has no obligation to update, modify or amend this report or to otherwise notify a reader thereof in the event that any matter stated herein, or any opinion, projection, forecast or estimate set forth herein, changes or subsequently becomes inaccurate.

Apex Securities Berhad does not warrant the accuracy of anything stated herein in any manner whatsoever and no reliance upon such statement by anyone shall give rise to any claim whatsoever against Apex Securities Berhad. Apex Securities Berhad may from time to time have an interest in the company mentioned by this report. This report may not be reproduced, copied or circulated without the prior written approval of Apex Securities Berhad.

Published & Printed by:

Apex Securities Berhad
197901003400 (47680-X)

(A Participating Organisation of Bursa Malaysia Securities Berhad)