

# Technical Radar

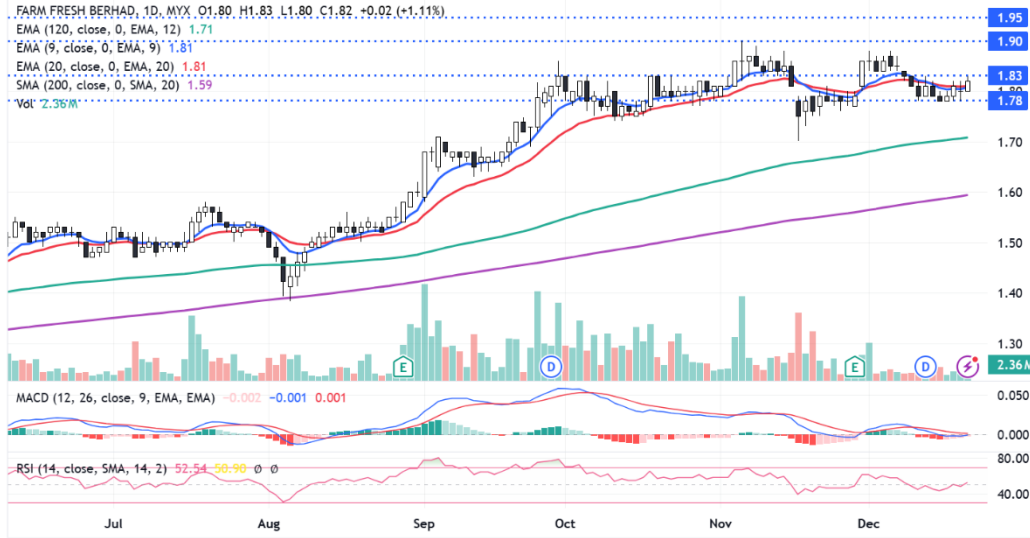
Monday, 23 Dec, 2024

**Amir Hamdan**

(603) 7890 8888 (ext 2112)

[amir.hamdan@apexsecurities.com.my](mailto:amir.hamdan@apexsecurities.com.my)

research\_dept published on TradingView.com, Dec 21, 2024 06:40 UTC+8



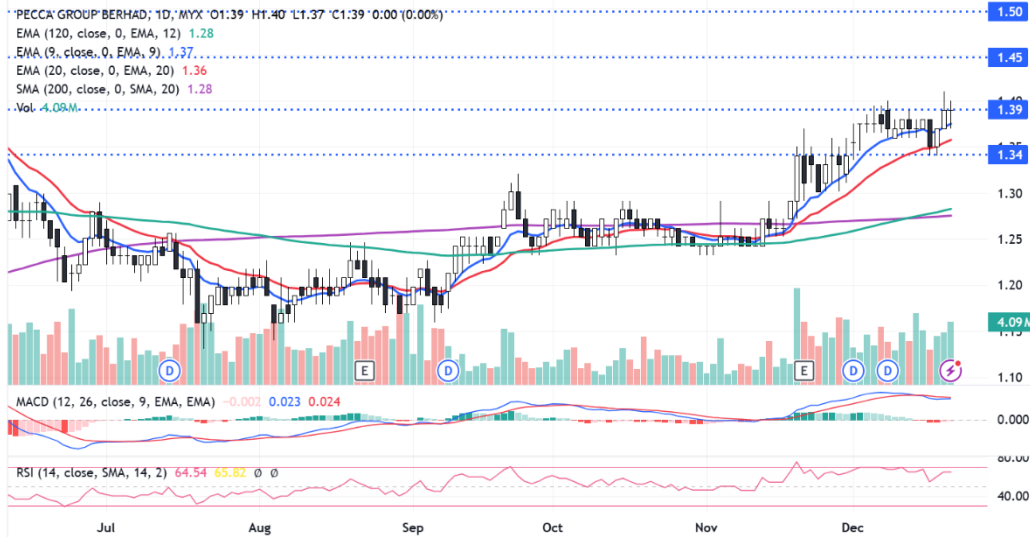
TradingView

## Technical Commentary:

Price is on the uptrend formation after bouncing off SMA200 in August. After charging sharply higher price has turned into a consolidation pattern. Coming closer, price has formed a bullish candle to close above EMA20. Traders may anticipate for a potential short-term consolidation breakout above RM1.83 to target the next resistances located at **RM1.90-RM1.95**. Downside wise, support is envisaged at **RM1.78**.

<b>Farm Fresh Bhd (5306)</b>		
Board: MAIN Trend: ★★★★★	Shariah: Yes Momentum: ☆☆☆☆☆	Sector: Packaged Foods & Meats Strength: ★★★★★
Trading Strategy: Monitor for breakout		
R1: RM1.900 (+4.40%)	R2: RM1.950 (+7.14%)	SL: RM1.780 (-2.20%)

research\_dept published on TradingView.com, Dec 21, 2024 07:24 UTC+8



TradingView

## Technical Commentary:

Price has formed a rounding bottom in August-September period and subsequently marched higher. After finding stability above EMA120, price advanced and the uptrend formation was established. Traders may monitor for a potential breakout above RM1.39 to target the next resistances located at **RM1.45.-RM1.50**. Downside wise, support is envisaged at **RM1.34**.

<b>Pecca Group Bhd (5271)</b>		
Board: MAIN Trend: ☆☆☆☆☆	Shariah: Yes Momentum: ☆☆☆☆☆	Sector: Automotive Parts & Equipment Strength: ★★★★★
Trading Strategy: Monitor breakout		
R1: RM1.450 (+4.32%)	R2: RM1.500 (+7.91%)	SL: RM1.340 (-3.60%)

---

#### Recommendation Framework:

**BUY:** Total returns\* are expected to exceed 10% within the next 12 months.

**HOLD:** Total returns\* are expected to be within +10% to -10% within the next 12 months.

**SELL:** Total returns\* are expected to be below -10% within the next 12 months.

**TRADING BUY:** Total returns\* are expected to exceed 10% within the next 3 months.

**TRADING SELL:** Total returns\* are expected to be below -10% within the next 3 months.

\*Capital gain + dividend yield

#### Sector Recommendations:

**OVERWEIGHT:** The industry defined by the analyst is expected to exceed 10% within the next 12 months.

**NEUTRAL:** The industry defined by the analyst is expected to be within +10% to -10% within the next 12 months.

**UNDERWEIGHT:** The industry defined by the analyst, is expected to be below -10% within the next 12 months.

---

#### ESG Rating Framework:

★★★★★ : Appraised with 3% premium to fundamental fair value

★★★★ : Appraised with 1% premium to fundamental fair value

★★★ : Appraised with 0% premium/discount to fundamental fair value

★★ : Appraised with -1% discount to fundamental fair value

★ : Appraised with -5% discount to fundamental fair value

---

**Disclaimer:** The report is for internal and private circulation only and shall not be reproduced either in part or otherwise without the prior written consent of Apex Securities Berhad. The opinions and information contained herein are based on available data believed to be reliable. It is not to be construed as an offer, invitation or solicitation to buy or sell the securities covered by this report.

Opinions, estimates and projections in this report constitute the current judgment of the author. They do not necessarily reflect the opinion of Apex Securities Berhad and are subject to change without notice. Apex Securities Berhad has no obligation to update, modify or amend this report or to otherwise notify a reader thereof in the event that any matter stated herein, or any opinion, projection, forecast or estimate set forth herein, changes or subsequently becomes inaccurate.

Apex Securities Berhad does not warrant the accuracy of anything stated herein in any manner whatsoever and no reliance upon such statement by anyone shall give rise to any claim whatsoever against Apex Securities Berhad. Apex Securities Berhad may from time to time have an interest in the company mentioned by this report. This report may not be reproduced, copied or circulated without the prior written approval of Apex Securities Berhad.

As of **Monday, 23 Dec, 2024**, the analyst(s), whose name(s) appears on the front page, who prepared this report, has interest in the following securities covered in this report:

(a) nil.

---